

2022

**NOVEMBER
28 - 29**

MELBOURNE
CONNECT
700 SWANSTON ST
CARLTON VIC

HEALTH DESIGN CONFERENCE AUSTRALASIA

**BREAKING
DOWN THE
SILOS**

“ *Siloed organisations cannot act quickly on opportunities that arise.* ”

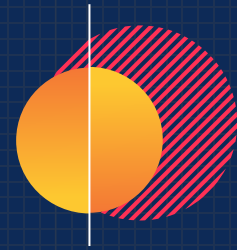
Kotter, J. P. (2014). Accelerate: Building Strategic Agility for a Faster-moving World. United States: Harvard Business Review Press.

PROUDLY SPONSORED BY:



BREAKING DOWN THE SILOS

AUSTRALASIAN HEALTH DESIGN CONFERENCE 2022



THEME

The Australasian Health Design Conference 2022 is a new and exciting opportunity organised by the Australian Health Design Council in collaboration with the New Zealand Health Design Council.

“ Breaking Down the Silos ”

The conference theme aims to explore how health design professionals; including architects, health planners, hospital representatives, clinicians, engineers, service providers, and researchers can unlock a wealth of collective knowledge and allow excellence in design to flourish.

We need to understand each other's perspectives and combine our collective expertise to plan and deliver integrated, holistic health care within an innovative infrastructure environment that meets the user's needs at all levels.

Designed by us, for us.

We are design and planning professionals, putting on a conference for our peers to share knowledge, promote research and work collaboratively towards better health care design.

If you want to participate in a professionally-guided event with a genuine commitment to challenge the status quo and engage in lively and passionate debate, this is the conference for you!

All fields of expertise relating to health care are welcome, from clients, consultants, planners, and suppliers. We will have a diverse line-up of speakers, and an fast-paced program of workshops, networking and engagement opportunities.

Come along: learn, connect and be inspired.

EVENT INFORMATION

We have curated a wide range of speakers with diverse perspectives on health design. We have new updates to the program, including more information about the current workshops and panels.

We are committed to waste reduction and will not be providing printed programs on the day. All information will be available on screen and online. You will receive the final program via email if you wish to print the program yourself.

Web-based live surveys will be used to moderate Q&A sessions, so we recommend that you have your mobile phone handy on the day to participate.



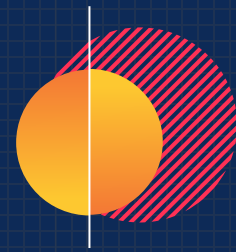
MELBOURNE CONNECT

700 Swanston St, Carlton VIC 3053

Trams run along Swanston Street, and stop at Melbourne Central Station and Flinders Street Station. The closest parking area is Cardigan House Parking.

BREAKING DOWN THE SILOS

AUSTRALASIAN HEALTH DESIGN CONFERENCE 2022



CONNECTED AND INTERACTIVE

Mentimeter

We will be using a live Q&A tool that is accessible on your mobile phone. You don't need to download any applications, but will need an internet connection and web browser such as Safari or Chrome.

All submissions are anonymous, but we encourage you to sign your name. When submitting your questions, please direct it to the speaker you would like to answer.

Scan the QR code to participate

> [or go to www.menti.com](https://www.menti.com) and use code 1957 0094



LinkedIn Event

All attendees of the conference are encouraged to connect, build relationships and meet with partners and colleagues. To facilitate safe and secure connection opportunities, we encourage you to join our LinkedIn Event page.

This will allow you to see the names of other attendees, without sharing your private data. You can request to connect with attendees who are not already in your network.

Follow the link below and click "attending" to join.
> [Go to LinkedIn Event](#)

Social Media

You can connect with AHDC via [LinkedIn](#) and [Twitter](#). If you are using social media to share your insights, reviews, and knowledge, we recommend using the hashtag **#AHDC2022**

#AHDC2022

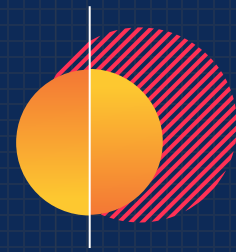
#AustralianHealthDesign

@aushdc



BREAKING DOWN THE SILOS

AUSTRALASIAN HEALTH DESIGN CONFERENCE 2022



Monday 28th November 2022

Registration opens at 7.45

DAY 1 PROGRAM

8:00 - 9:00

RESEARCH PRESENTATIONS

Katharina Nieberler-Walker, *Therapeutic Hospital Gardens.*
Sanaz Memari, *Future Proofing Hospital Building Design: Research to Practice.*
Anahita Sal Moslehian, *Innovation in Hospital Building Design.*



9:00 - 9:30

CONFERENCE OPENING

Acknowledgement of Country, Welcome and Introductions

9:30 - 10:30

PLENARY A

Dinesh Palipana OAM, 2021 QLD Australian of the Year, Doctor, Lawyer, Researcher, Disability Advocate. *People will always remember how you make them feel.*



Session Sponsor
Clarke Hopkins Clarke

10:30

Morning Tea

11:00 - 12:00

SESSION 1

Katrina Lewis, Director Patient Experience and Consumer Engagement, Alfred Health, VIC. *Optimising staff experience to optimise patient experience.*
Michel Verheem, Director, ID-LAB. *Co-designing a wayfinding system for vision-impaired users: Sunshine Coast Case Study.*



12:00 - 13:00

SESSION 2

Justin Littlefield, Health Partner, **Cath Muhlebach**, Health Partner & **Stephanie Clarke**, Interior Designer, ClarkeHopkinsClarke Architects. *Co-design, Collaboration and Mental Health Design After the Royal Commission.*



Session Sponsor
Hipac
We're here for life

13:00

Lunch

14:00 - 14:45

SESSION 3

Shari Blanch, Designer and Lead Health Researcher & **Annabel Frazer**, Health Planning Principal, Jacobs. *Understanding post-occupancy evaluation processes for healthcare facilities in Australia and Aotearoa New Zealand.*



Session Sponsor
GETINGE

14:45 - 15:30

SESSION 4

Andrew Dick, Director, Program Advisory, Aurecon & **Andrew Inwood**, Associate, Team2 Architects. *Victorian Health Building Authority Modular Emergency Department Program.*



Session Sponsor
in vitro technologies

15:30

Afternoon Tea

16:00 - 16:45

SESSION 5

Luke Baxby, AU National Healthcare Leader, Deloitte. *Australian Health Reimagined.*

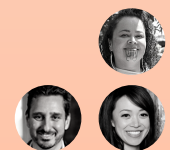


Session Sponsor
aurecon

16:45 - 17:45

SESSION 6

Elisapeta Heta, Principal and Kaihautū Whaihangā – Māori Design Leader, Jasmāx. *Speaking from the Whenua: designing with the land.*
David Kaunitz & Ka Wai Yeung, Co-Directors, Kaunitz Yeung. *Health Design with our First Nations Peoples.*



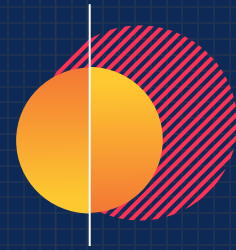
18:00

Cocktail Party

Sponsored by: **dRofus**
AN INTEGRAL COMPANY

BREAKING DOWN THE SILOS

AUSTRALASIAN HEALTH DESIGN CONFERENCE 2022



DAY 2 PROGRAM

Tuesday 29th November 2022

Registration opens at 7.45

8:00 - 9:00

RESEARCH PRESENTATIONS



Tianyi Yang, *Sightlines & visual connection in stroke rehab.*
Belinda Seale, *Nature-based design in stroke rehab settings.*
Michelle Shannon, *Uncovering how people after stroke experience hospitals using Virtual Reality.*

9:00 - 10:00

Session Sponsor **Deloitte**

PLENARY B

Forbes McGain, Anaesthetist and intensive care physician at Western Health, Melbourne. *How Hospitals can Race to Zero Carbon.*



10:00 - 11:00

Session Sponsor **dRofus**

DEBATE: BREAKING DOWN THE SILOS

A lively moderated debate amongst industry leaders featuring:
Dr Ramsey Awad, Executive Director, Hunter New England Local Health,
Clare Solomon, Vice President, NorthWest Healthcare Properties,
Gunther De Greave, Managing Director, Destravix,
Luke Baxby, AU Health Sector Leader, Deloitte, and
Hediyeh Vahdat Managing Director, Linéaire Projects.



11:00

Morning Tea

11:30 - 12:30

Session Sponsor **HSPC HEALTH ARCHITECTS**

SESSION 7

Ben Woenig, CEO of Visione Group / Principal Technology Architect. *The Value of Enterprise & Technology Architecture for Healthcare Projects.*



12:30

Lunch

13:30 - 14:30

SESSION 8

Matt Cameron, Technical Director - Structural Engineering, Beca NZ. *Seismic risk & broader considerations for hospital campus-wide resilience.*
Jessica Hogg, Associate Sustainability, Arup, & **Sharon Desmond**, Manager, Clinical Service Design & Service Planning, Mercy Health. *Mercy Health's GHG Accounting and Net Zero strategy.*



14:30 - 15:30

SESSION 9

Siobhan Titlestad, Senior Interior Designer & **Jacqueline Baker**, Head of Research, Cox. *Safe Access of Sensitive Women's Services by Environmental Design.*
Leanne Guy, Health Sector Leader & **Adam Davies**, Joint Sector Leader - Education & Science, Hassell. *Striving for more meaningful, authentic First Nations Australian Peoples engagement in the Health Sector*



15:30

Afternoon Tea

16:00 - 17:30

CONCURRENT SESSIONS

The Many Faces of Net Zero
Sustainability Workshop with **Andy Bradley**, (xburo) and **David Cummins**.



Session Sponsor **ENWARE**

Hospitals & Cities
Urban Design Panel Discussion with **Alison Huynh** (Bates Smart) and **Helen Day** (Health Infrastructure VIC).



Session Sponsor **IPG**

How Do We Eat an Elephant? One Bite at a Time
Strategic Health Planning Panel with **Tara Veldman** (BLP), **Lesley Alway** (Strategic Health Resources), **Ben Woenig** (Visione Group) and **Isabelle Mansour** (Mace).



Session Sponsor **CANTEL**
a STERIS company

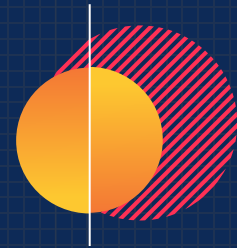
17:30 - 18:00

CONFERENCE CLOSING

Acknowledgements
Post-event drinks to follow, venue to be announced.

BREAKING DOWN THE SILOS

AUSTRALASIAN HEALTH DESIGN CONFERENCE 2022



CONCURRENT SESSIONS

The Many Faces of Net Zero

Co-chaired by Andy Bradley and David Cummins



Session Sponsor
ENWARE

"Net Zero" is the new black, everywhere you go someone is spruiking about their Net Zero Journey or vision. Join us in a workshop where we will explore what Net Zero really means in healthcare. Some of it might surprise you!

We will look at the approach of other countries to see how they are tackling the challenge. With your help, we will take the first steps to develop a roadmap, or maybe an atlas, for the route to true net zero for healthcare.

The session will include a short presentation followed by a participatory workshop. We will break out into smaller groups for brainstorming before reconvening to share our ideas.

Hospitals and Cities

Alison Huynh and Helen Day in conversation



Session Sponsor
IFG

In large health redevelopments, the experiential aspect of healthcare, as a whole, is often subverted by the complex and technical nature of facilities, where practical functions and needs drive spatial planning and design.

From the first planning steps of a health design project, every function is carefully selected and sorted into specific zones, which lead to Departments, Wings, and Buildings. These are often clearly legible in a building plan; but less legible to the public, who need signs and maps to assist in navigation.

"Hospitals and Cities" will be a panel discussion on the role of health buildings as part of a broader city context, the opportunities to create better 'people places', and to rethink the process of hospital growth and redevelopment through the lens of city-making and placemaking.

How Do We Eat an Elephant? One Bite at a Time.

Moderator: Isabelle Mansour, Speakers: Lesley Alway, Tara Veldman and Benjamin Woenig



Session Sponsor
CANTEL
a STEPH company

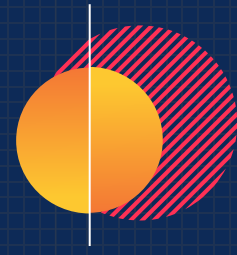
The planning, development and procurement of well-designed healthcare facilities start with the appointment of a quality design and project team. A range of skills and expertise needs to be embedded in the design team - including architecture, health planning, landscape architecture, and specialist engineering consultants.

Hospital development (The Elephant) is a complex process made simpler if approached through a meticulous and well-structured process (one bite at a time). This facilitates a more comprehensive understanding of a situation, clearer problem definition and design testing.

This dynamic session explores how a carefully conceived brief is a critical determinant of high-quality design. What should an effective brief outline? How can clinical planning impact stakeholders and design team cohorts for better design outcomes?

BREAKING DOWN THE SILOS

AUSTRALASIAN HEALTH DESIGN CONFERENCE 2022



AHDC

PROUDLY SUPPORTED BY

Disclaimer: Sponsors have no editorial control over the conference program and do not provide financial or material compensation to presenters. AHDC is a registered not-for-profit organisation. All funds raised are directed towards conference costs and future AHDC events and initiatives.

FOUNDATION PARTNERS



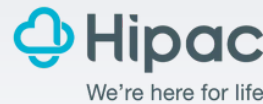
INDUSTRY PARTNERS



EVENT PARTNER



CONFERENCE PARTNERS



BROUGHT TO YOU BY



IN ASSOCIATION WITH

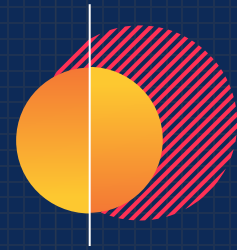


RESEARCH PARTNER



BREAKING DOWN THE SILOS

AUSTRALASIAN HEALTH DESIGN CONFERENCE 2022



AHDC

AUSTRALIAN HEALTH DESIGN COUNCIL

Australian Health Design Council (AHDC) is a non-government organisation of professionals involved and interested in high quality design of health facilities. It is the conduit between knowledge providers and users in Australian health design.

We have a well-established program of regular events for our members sharing health design innovations, evidence and experience. These events are available to members in all locations in Australia and proudly sponsored by industry partners.

Since our foundation, AHDC has been committed to creating and sharing knowledge about the design of healthcare facilities with all who are interested in developing the best possible health buildings for the Australian community. We invite you to follow our research-focused blog, and to contribute your knowledge and expertise to its ongoing development.

AHDC Members can access a range of benefits, including exclusive events, continuing professional education, past presentations and discounted conference tickets. Membership is \$220 per financial year with discounted rates for students and non-practicing members.

Our Objectives

- To promote innovation in health facility design, and disseminate results for feedback, debate and improved performance.
- To promote research and education in health facility design, ensuring the long-term sustainability of the industry.
- To provide an expert voice for health design professionals in dealing with government and other policymakers regarding matters that affect the design or delivery of high-quality healthcare facilities.
- To align with other agencies in the sector to share knowledge and understand goals and objectives to improve health facility design and procurement.
- To bring together health design professionals for networking and knowledge sharing purposes.

Our Partners

Australian Health Design Council thanks our Foundation, Industry and Event Partners who provide continuing support for our activities.

Connect with AHDC via Website, LinkedIn and Twitter



FOUNDATION PARTNERS



INDUSTRY PARTNERS

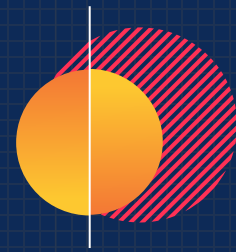


EVENT PARTNER



BREAKING DOWN THE SILOS

AUSTRALASIAN HEALTH DESIGN CONFERENCE 2022



AUSTRALIAN HEALTH DESIGN COUNCIL

2022 - 2023 Committee Members



Kate Copeland
Executive Director
Strategy, Planning,
Assets & Infrastructure,
Metro North QLD
AHDC Role:
• Chair (President)



Jane Carthey
Doctor Creative
Industries
AHDC Role:
• Immediate Past
President
• Research Blog



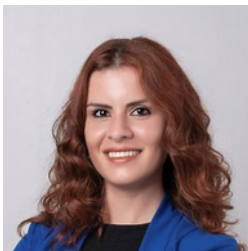
Harm Hollander
Conrad Gargett,
Principal
Doctor Creative
Industries
AHDC Role:
• Treasurer



Warren Kerr
Hames Sharley
National Director,
Health Portfolio
AHDC Role:
• International
Relations



Michel Verheem
ID Lab | Director
AHDC Role:
• Int.l study tour
• Conference



Isabelle Mansour
Senior Manager, Clinical
Planning, Mace Group
AHDC Role:
• Events Portfolio
• Conference



Alison Huynh
Associate Director
Bates Smart
AHDC Role:
• Media/Marketing
• Conference
• Sponsorship



Andy Bradley
Managing Director,
XBuro
AHDC Role:
• Sustainability
• Assistant Treasurer



Garry Coff
Principal Health
Facility Planner, Garry
Coff Consulting
Services



Dario Salvatore
Director at Hodgkison
Architecture Interiors

Sub-Committees & Support

Special thanks to David for his initiative and creativity in producing the successful AHDC podcast Health Design on the Go



David Cummins
Health Property
Developer
• Podcast Host
• Research Blog

Special thanks to Lesley and John for their continued commitment to AHDC as past committee members and conference organisers



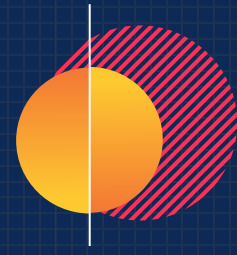
Lesley Alway
Director, Strategic
Health Resources
• Conference
• Past Committee
Member
(Sponsorship)



John Temple
Senior Project Manager,
Design Manager, Metro
North Health Service
• Conference
• Past Committee
Member (Secretary)

BREAKING DOWN THE SILOS

AUSTRALASIAN HEALTH DESIGN CONFERENCE 2022



CONTINUING PROFESSIONAL DEVELOPMENT

Australian Health Design Council CPD sessions take on a wide variety of formats, generally featuring keynote presentations, discussion and Q&A on topics relevant to architects and building design professionals involved in the design of healthcare and related environments.

Each session is followed by informal discussion and networking opportunities. Presenters and hosts are carefully selected for their knowledge and expertise in healthcare design, delivery and project management. Post-event questionnaires are circulated to attendees to evaluate the quality of the presentation and collect on-going feedback.

Learning Outcomes and Assessment

Participants should review Sessions Synopsis to determine the relevance to their profession and areas of interest.

CPD for Project Managers

AIPM registered Project Managers (RegPM) can log 2 CPD points per hour. Participants should record their points under the category "A03 Development - Event 3" and maintain their own records of attendance.

CPD for Engineers

Engineers with EA Chartered credentials can access 1 CPD point for per hour. Participants should assess the suitability of the content material for informing their engineering practice and log the activity type as "Type 2 - Workshop or Seminar".

Record Keeping

Participants are responsible for maintaining their own records of attendance by downloading event details, presentation slide decks, individual notes, and questionnaire responses.

If required, members can request certificates of participation by emailing conference@aus hdc.org.au and attaching their records.

CPD for Architects

Registered Architects in all Australian jurisdictions can log 1 formal CPD points per hour. A summary and synopsis of eligible sessions will be circulated prior to the event.

Architects are expected to complete a post-event statement of a minimum of 500 words per session attended. The post-session discussion is an opportunity to allow for feedback and discussion to assist in answering the questions.

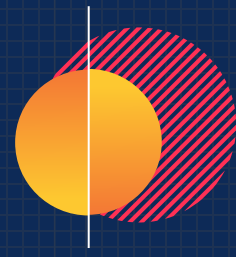
Reports should include:

- Summary of the topic and knowledge shared
- Relevance to your architectural practice
- Review and analysis of lessons learned

Architects must submit written reports to conference@aus hdc.org.au for review. Please include your Name, Registration No, and list of sessions attended.

BREAKING DOWN THE SILOS

AUSTRALASIAN HEALTH DESIGN CONFERENCE 2022



CANCELLATION POLICY

Requesting a Refund

If you cancel your ticket prior or on Monday 7 November, you will receive a full refund (minus \$100 administrative fee).

If you cancel your ticket on or later than Tuesday, 8 November, you will receive no refund.

Requests must be submitted in writing to conference@aus hdc.org.au. The effective date is the date of dispatch.

Please allow up to 5 working business days for the refund to be issued.

Substitution

If you are no longer able to attend, you are welcome to nominate someone else to participate in your place.

If the substitute is not in the same ticket category that was initially booked, an additional fee will be due to reflect the new delegate rate.

Please advise substitutions via email. Substitutions can be made up to three days before the event.

Cancellations due to Illness or Covid-19

If you contract COVID-19 or another medical condition and you are unable to attend, please email conference@aus hdc.org.au as soon as possible.

Requests within 48 hours before the event's start will be considered on a case-by-case basis.

If you no longer wish to attend the AHDC conference due to other concerns about COVID-19, this may be treated as a 'change of mind'. The standard refund policy will apply.

Conference Postponement

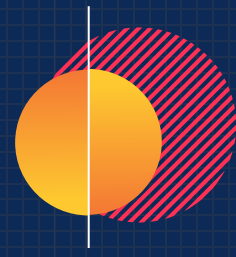
If the conference is unable to be held due to government restrictions for COVID-19 or other unexpected reasons, the AHDC Conference will be postponed and therefore not considered cancelled.

New conference dates will be communicated to you at least four months prior to the event. After this time, the standard refund policy will apply.

Other Conditions

Conference tickets cannot be shared with non-delegates or sold by third parties.

Recording, videotaping or live streaming of the AHDC Conference is strictly prohibited.



CLEAN AND GREEN HEALTH DESIGN

#AustralianHealthDesign
Podcast Launch

Hosted by David Cummins
Available on Spotify, Apple Podcasts,
or wherever you get your podcasts



Amir Grigis



Anne Kovachevich



Garry Coff



Siohban Leach



Ross Donaldson

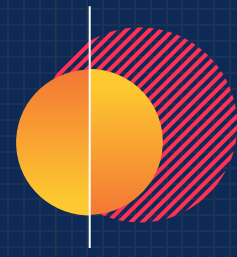


Florence Wong



BREAKING DOWN THE SILOS

AUSTRALASIAN HEALTH DESIGN CONFERENCE 2022



SPEAKER INFORMATION



Adam Davies

Hassell Joint Sector Leader - Education & Science

Adam is co-sector Leader for Hassell's Education and Science Sector globally. He specialises in complex precincts in the higher education and health sectors and for innovation precincts and districts and is multi-award winning in this sector nationally and internationally.

Adam also leads the Hassell Cultural Engagement Group responsible for the Hassell RAP, developing practice readiness for Hassell's work in this area, and their work with First Nations Australian Peoples.

SESSION 9



Alison Huynh

Associate Director, Bates Smart

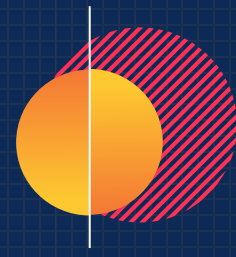
Alison is an architect at Bates Smart in Sydney. She is passionate about creating buildings that balance the clinical and operational requirements with a human-centred experience. Her philosophy is that excellence in design is critical in the perception and lived experience of health buildings.

Alison is a key contributor to healthcare strategy across Bates Smart projects in Sydney and Melbourne including the current Royal Prince Alfred Hospital Redevelopment. She advocates for better research, design outcomes and environmental rigour in the health sector.

WORKSHOP Hospital and Cities
AHDC Committee

BREAKING DOWN THE SILOS

AUSTRALASIAN HEALTH DESIGN CONFERENCE 2022



SPEAKER INFORMATION



Anahita Sal Moslehian

Postdoctoral Research Fellow, Deakin University

Anna is a professional researcher working on healthcare building design. Her expertise expands to design innovation, biophilic design and restorative environment design.

During her PhD study, Anna developed her systematic thinking and interdisciplinary research skills that are crucial for generating knowledge in the highly multi-disciplinary context of healthcare design leading to timely design innovations. She is currently a Postdoctoral Research Fellow with HOME Research Hub and Live+Smart Research Lab in the School of Architecture and Built Environment at Deakin University.

RESEARCH 1



Andrew Dick

Director, Program Advisory, Aurecon

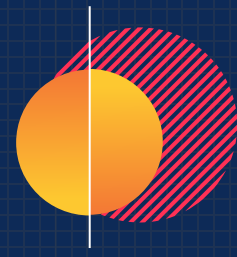
Andrew Dick is an experienced Project Director across a wide range of projects in the health and education sectors.

Andrew has worked on a number of complex multi-phase hospital redevelopment programs including Great Ormond Street Hospital for Children and Imperial College Healthcare. As Program Director, Andrew drew upon his experience in Australia and the United Kingdom to lead the fast paced delivery of the COVID-19 Modular Emergency Department Program for the Victorian Health Building Authority (VHBA).

SESSION 4

BREAKING DOWN THE SILOS

AUSTRALASIAN HEALTH DESIGN CONFERENCE 2022



SPEAKER INFORMATION



Andrew Inwood

Associate, Team2 Architects

Andrew Inwood is an Associate at Team2 Architects, experienced in the design, documentation and delivery of projects across a range of sectors including education, residential, commercial and hospitality, and now specialising in healthcare buildings and developments.

Previous work in the healthcare industry includes seven years as an Operating Theatre Technician, while completing a Bachelor of Science in Biomedicine and a Bachelor of Environmental Design. This has been instrumental in his knowledge and understanding of clinical practise, flows and operations. Andrew is a registered architect, member of the AHDC and a Greenstar Accredited Professional.

SESSION 4



Andy Bradley

Managing Director, XBuro

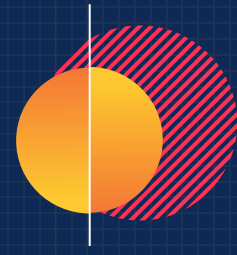
Andrew is the founder and Managing Director of XBURO, a multi-disciplinary project management & engineering design consultancy specialising in the Healthcare sector. He is a Certified Practising Project Director (CPPD) and a Member of the Australian Institute of Project Management.

Working globally, Andrew has gained extensive experience of all types of procurement including Construction Management, Management Contracting, PPP, PFI and Performance Related Partnering. Andrew is a guest lecturer on Sustainable Design at Bond University (Gold Coast) and is a regular speaker in a number of public forums; presenting on sustainable design, procurement and modern methods of construction.

WORKSHOP The Many Faces of Net Zero
AHDC Committee

BREAKING DOWN THE SILOS

AUSTRALASIAN HEALTH DESIGN CONFERENCE 2022



SPEAKER INFORMATION



Annabel Frazer

Health Planning Principal (Jacobs)

As Jacobs Health Planning Principal, based in Brisbane, Australia, Annabel's career transition from nursing and clinical management to interior design and health planning offers a unique and multifaceted perspective to health service and facility planning projects. Her dual perspective enables a holistic approach to strategic health service delivery imperatives and a commitment to evidence-based design principles.

Actively working across Australia, New Zealand and Singapore, Annabel shares extensive experience in the planning of health systems and infrastructure which promote innovative models of care within a sustainable investment framework.

SESSION 3



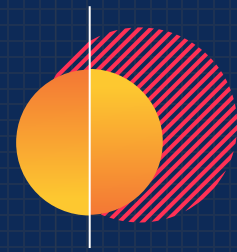
Belinda Seale

PhD, School of Health and Social Development, Faculty of Health, Deakin University

Belinda is a registered Architect, Access Consultant, and Principal of her own Melbourne based practice, Haptic Space. She has over 20 years' experience in the design and delivery of enabling and therapeutic environments. She sits on the Australian Institute of Architects National Enabling Architecture Committee, chairs the Victorian sub-committee, and represents the Institute on the UIA Architecture for All Work Group.

Belinda is currently undertaking research into stroke rehabilitation environments as a PhD candidate at Deakin University, working in conjunction with the NOVELL Redesign collaboration based at the Florey Institute of Neuroscience and Mental Health.

RESEARCH 2



SPEAKER INFORMATION



Ben Woenig

CEO of Visione Group / Principal
Technology Architect

Benjamin is a seasoned enterprise, business, data and technology solution architect with more than 15 years experience across healthcare, utilities, mining, energy and manufacturing industry verticals.

Benjamin was a key technology resource for the Royal Adelaide Hospital project 2015 - 2018 and worked on the business and systems architecture with the necessary integrations to support SA Health's transition to the new facility and its new modes of care.

He is the founder of Adelaide based technology consultancy and systems integration firm, Visione Group.

SESSION 7



Cath Muhlebach

Health Partner at ClarkeHopkinClarke
Architects

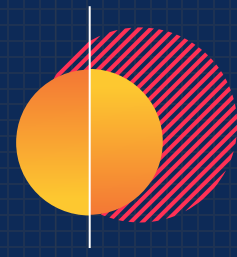
Cath Muhlebach is a Partner at ClarkeHopkinClarke Architects, where she co-leads a growing health team delivering new hospitals, health hubs, regional facilities and mental health facilities.

She is a stakeholder engagement and mental health design specialist with a focus on aspirational design that's also deliverable. Her mental health design experience includes community and acute settings.

SESSION 2

BREAKING DOWN THE SILOS

AUSTRALASIAN HEALTH DESIGN CONFERENCE 2022



SPEAKER INFORMATION



Clare Solomon

Vice President Sustainability & Development, NorthWest Healthcare Properties REIT

Clare Solomon is the Vice President, Sustainability and Development at NorthWest Healthcare Properties REIT, where she is involved in developing the Group's global ESG strategic planning and leads its activation in Australia and New Zealand.

Clare has over 13 years of specialised healthcare real estate experience, having been involved in over \$3 billion of hospital, laboratory and research projects. Clare is passionate about realising the possibilities where healthcare and sustainability meet.

DEBATE



David Cummins

Health Development Manager

David is a highly enthusiastic, dedicated and driven Health Property Developer with experience in a variety of project roles. From Planning to Project Delivery and Commissioning, David understands both the Healthcare needs and Construction requirement for health projects.

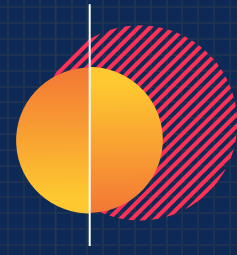
As a Physiotherapist for the last 20 years, David has a strong understanding of the health industry which he has been able to apply to multiple and complex projects for over 15 years.

He is the host of Health Design on the Go podcast, which provides a unique opportunity to interview health design specialists around the world.

WORKSHOP The Many Faces of Net Zero
AHDC Podcast Host

BREAKING DOWN THE SILOS

AUSTRALASIAN HEALTH DESIGN CONFERENCE 2022



SPEAKER INFORMATION



David Kaunitz

Director, Kaunitz Yeung Architecture

David Kaunitz founded Kaunitz Yeung with his wife Ka Wai Yeung following his return to Sydney after living in the UK and the Solomon Islands. His seven years in the UK included five as a Director of BVN, running its London studio where he worked on large-scale European projects.

With projects in more than 30 Aboriginal communities, David has developed unmatched expertise working with Aboriginal stakeholders and, as a consequence, was commissioned to author the 2017 update to the 'Australian Government, Department of Health, Aboriginal and Torres Strait Islander Funded Capital Works Projects – Facility Design Guidelines'.

SESSION 6



Dinesh Palipana OAM

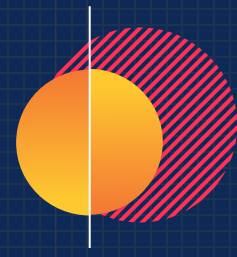
2021 QLD Australian of the Year, Doctor, Lawyer, Researcher, Disability Advocate.

Dinesh was the first quadriplegic medical intern in Queensland. Dinesh is a doctor, lawyer, disability advocate, and researcher.

Halfway through medical school, he was involved in a motor vehicle accident that caused a cervical spinal cord injury. He works in the emergency department at the Gold Coast University Hospital. He is a senior lecturer at the Griffith University and adjunct research fellow at the Menzies Health Institute of Queensland.

He was awarded the Medal of the Order of Australia in 2019. Dinesh was the Queensland Australian of the Year for 2021. His autobiography, *Stronger*, was published by Pan Macmillan in 2022.

PLENARY A



SPEAKER INFORMATION



Elisapeta Heta

Principal and Kaihautū Whaihangā – Māori Design Leader

Principal and leader of Waka Māia at Jasmax, Elisapeta is helping to guide Jasmax on an inter-generational journey towards becoming an authentically bicultural design practice. Waka Māia was founded in 2015 to provide a Māori design voice within Jasmax.

She is also an advocate for change, speaking internationally to provide Māori and Pasifika perspectives on the importance of place to both design and cultural identity. Elisapeta draws on her lived experiences to create opportunities for future generations of indigenous designers, and importantly, to demonstrate to young Māori and Pasifika that it's possible to achieve equal commitment to career and community.

SESSION 6



Forbes McGain

Anaesthetist and intensive care physician at Western Health, Melbourne

Forbes is an anaesthetist and intensive care physician at Western Health, Melbourne, Australia and Associate Professor, School of Medicine, University of Sydney, and the University of Melbourne.

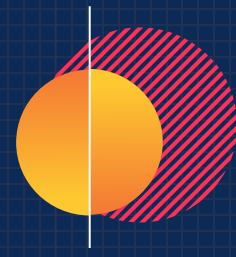
He is a First Part Examiner for the College of Intensive Care Medicine of Australia/New Zealand.

He is engaged in ongoing research collaborative projects particularly focused on the environmental, social and financial sustainability of anaesthesia and intensive care medicine.

PLENARY B

BREAKING DOWN THE SILOS

AUSTRALASIAN HEALTH DESIGN CONFERENCE 2022



SPEAKER INFORMATION



Gunther De Graeve

Chief Executive of the International Academy for Design and Health; Managing Director of Destravis

Gunther promotes knowledge sharing and the translation of research for real project benefit. He frequently engages in research studies which realise system improvements.

He is founder and Managing Director of Destravis and is recognised as a thought-leader for his innovation in operational models, pioneering modular health facilities, sustainable approaches to planning and for promoting flexibility and future trends.

He is a Fellow with ACHSM and completed a study at Harvard Medical in Digital Health. He is currently co-authoring a book on Sustainability and Salutogenic Design.

DEBATE



Hedyeh Vahdat

Managing Director

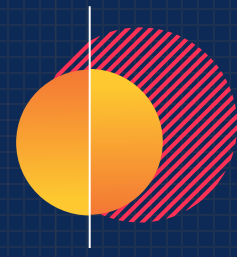
Hedyeh is the Managing Director and co-founder of Linéaire Projects, a boutique specialist Health Advisory and Project Management company. She has over 21 years of experience in the health sector, and has held executive roles at department, facility, district, and state levels of NSW Health. She is a current practicing senior clinical pharmacist, researcher, and academic. More recently, she has embarked on leading the implementation of proteomics into clinical practice in partnership with the Children's Medical Research Institute.

Hedyeh was the recipient of NSW Health Executive Leadership scholarship, the John Whitely award from the Australian Institute of Medical Scientists, and the David Nelson Scholarship from the Kolling Institute of Medical Research.

DEBATE

BREAKING DOWN THE SILOS

AUSTRALASIAN HEALTH DESIGN CONFERENCE 2022



SPEAKER INFORMATION



Helen Day

Masterplanning, Strategic Urban Design,
Health Infrastructure Victoria

Helen Day is an urban strategist, urban designer, architect and public domain specialist with extensive policy, enabling and advocacy experience in Europe, the United Kingdom and Australia. For Helen, astute design thinking and know how are at the centre of our most celebrated urban environments and policies.

To bring forward genuine design excellence, Helen draws on her broad international and local experience in city design, urban planning, architecture, place making, economic development and environmental sustainability. Helen is a member of the Victorian Design Review Panel with the Office of the Victorian Government Architect.

WORKSHOP Hospitals and Cities



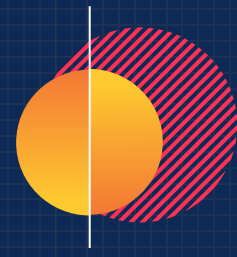
Isabelle Mansour

Senior Manager, Clinical Planning, Mace

Isabelle is an energetic, collaborative, and goal-oriented clinical planner, eager to make a positive change and challenge the status quo to deliver better results. Isabelle understands the importance of upfront planning and co-design coupled with developing evidence-based models of care for the success of health facility development projects. During the past few years, Isabelle was closely involved in the health planning of major hospital development projects in NSW.

Her educational background, combined with her experience in health design, equips her with the skills and knowledge to function as a translator between the clinical and construction languages, which is key to achieving unified project goals.

WORKSHOP How Do We Eat an Elephant?
AHDC Committee (2022)



SPEAKER INFORMATION



Dr Jacqueline Baker

Head of Research and Development, Cox

Dr Baker is a behavioural scientist with 20 years+ experience in design and built-environment research undertaken in architecture & engineering practices and academia, in Australia and the UK. Jacqueline leads COX Architecture's research programs including the Sector Research and Employee Research Grant programs.

She holds a PhD from Monash University having completed a research-by-thesis program on user preferences for apartment layouts, and an MSc in Environmental Psychology from the University of Surrey (UK) focusing on user preferences for urban greenspace.

SESSION 9



Jessica Hogg

Arup, Associate Sustainability

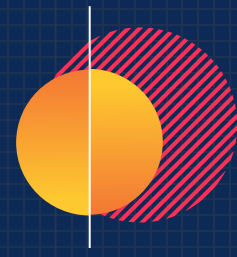
Jess is an Associate in the Sustainability team at Arup, with more than 12 years' experience across Australia and the UK. Her role sees her delivering sustainability strategies, advisory services and buildings projects for private and public sector clients throughout the region.

She is committed to climate change mitigation and adaptation, and is passionate about facilitating a just transition across the healthcare sector and our communities more broadly.

SESSION 8

BREAKING DOWN THE SILOS

AUSTRALASIAN HEALTH DESIGN CONFERENCE 2022



SPEAKER INFORMATION



Justin Littlefield

Health Partner at ClarkeHopkinsClarke Architects

Justin is a Health Partner at ClarkeHopkinsClarke Architects, whose 30 years of design experience and business acumen has helped the practice become one of Victoria's leading providers of architectural services to the health industry.

Justin's experience extends beyond health, including mental health facilities, to education, commercial, mixed-use and multi-residential design – an asset on the complex hospital projects his team delivers locally and internationally.

SESSION 2



Katharina Nieberler-Walker

Inaugural recipient of the 2022 AHDC Scholarship, PhD Scholar at Griffith University and a Director of the Australian Institute of Landscape Architects

As a Director of the Australian Institute of Landscape Architects Katharina leads an agile profession that creates nature-based places to support vibrant communities and a thriving planet. Notable projects include the 'Healing Gardens' of the Queensland Children's Hospital in Brisbane; and, the 'Nature that Nurtures' vision for Victoria Park, Brisbane's grandest park redevelopment for 50 years.

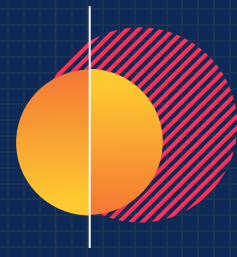
Her research now serves to consolidate her practical expertise and interrogates the role of purposefully designed therapeutic landscapes in hospitals for the health benefits of patients, their families and staff.

RESEARCH 1

AHDC Research Scholarship 2022

BREAKING DOWN THE SILOS

AUSTRALASIAN HEALTH DESIGN CONFERENCE 2022



SPEAKER INFORMATION



Katrina Lewis

Director Patient Experience and Consumer Engagement, Alfred Health

Katrina is the Alfred Health Director of Patient Experience and Consumer Engagement. Prior to this role she was the Associate Director of Nursing, Practice Development.

Her experience spans both operational and professional roles and her work focuses on strategy development, continuous improvement and using co-design to foster consumer and community engagement.

Her interest and area of work focuses on strategy development, continuous improvement and co-design to foster consumer and community engagement. He is passionate about environments that foster creativity and innovation and deliver high quality compassionate care.

SESSION 1



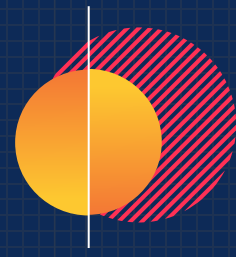
Ka Wai Yeung

Director, Kaunitz Yeung Architecture

Ka Wai co-founded Kaunitz Yeung Architecture with her husband David Kaunitz with their shared passion in creating socially responsible, culturally sensitive and humane architecture.

Born in Hong Kong, educated in New Zealand and Australia, Ka Wai finds herself constantly bridging and crossing between two worlds – her Chinese upbringing and being part of a diaspora in the Western world, and in bringing out the ancient wisdom and vernacular knowledge of her clients and the communities she serves in a modern context. She developed a deep interest in how spatial design can aid in bridging gaps in society and foster continuation of heritage and culture.

SESSION 6



SPEAKER INFORMATION



Leanne Guy

Hassell Health Sector Leader

Leanne is Hassell's global health sector leader. With a background in both nursing and design and more than 20 years working on major hospital projects in Australia and the UK, her experience has enabled her to develop an in-depth understanding of human behaviour and the need for a holistic design response and creating environments for wellbeing.

Leanne has a particular interest in environmental psychology and sustainable futures in the health sector.

SESSION 9



Lesley Alway

Director and Clinical Planner, Strategic Health

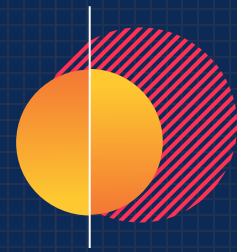
Lesley Alway is a clinical health planner working in Australia and Asia. With more than 30 years of clinical experience in the healthcare industry, she has participated in the design and development of a large number of state-of-the-art hospitals and healthcare facilities.

Her specialty is in highly critical areas such as Operation Suites and CSSD, ICU and Emergency department design and infection control practices, with an emphasis on productivity as well as resources management, always in compliance with the newest and strict national and international standards.

WORKSHOP How Do We Eat an Elephant?
AHDC Committee (2022)

BREAKING DOWN THE SILOS

AUSTRALASIAN HEALTH DESIGN CONFERENCE 2022



SPEAKER INFORMATION



Luke Baxby

AU National Healthcare Leader, Deloitte

As Deloitte's AU National Healthcare Leader, Luke is committed to improving healthcare systems that deliver better outcomes and experiences for patients, clinicians, public and private organisations.

Over the course of his 20+ year career in healthcare, Luke has dedicated himself to understanding client needs. His recent project work includes developing a roadmap to transform patient pathways, identifying opportunities for improved healthcare service quality, empowering consumers through consistent and sustainable workflow practices and exploring the drivers and responses to increased services pressures within Emergency departments.

SESSION 5 + DEBATE



Matt Cameron

Technical Director - Structural Engineering, Beca

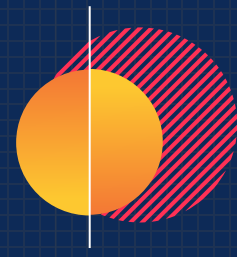
Matt is a Structural Engineer and Technical Director for Beca, based in Christchurch NZ. In recent years Matt has focused on the delivery of healthcare projects and business cases, with a specialization in seismic design and campus wide seismic resilience.

Having lived and worked through the devastating Canterbury earthquakes of 2010 and 2011, Matt brings a unique blend of technical and practical experience to seismic resilience planning.

SESSION 8

BREAKING DOWN THE SILOS

AUSTRALASIAN HEALTH DESIGN CONFERENCE 2022



SPEAKER INFORMATION



Michel Verheem
Director at ID - LAB

Michel is a leader in user-centred wayfinding design - with over 30 years of experience. He founded ID-LAB in 2006, and in 2020 opened studios in France and The Netherlands.

As a strategist, he is a multi-field expert with a deep understanding of human behavioural psychology, process discovery, stakeholder management, change management, design and architecture.

He combines this expertise with his drive for user satisfaction to create user-centric solutions.

SESSION 1

AHDC Committee



Michelle Shannon
PhD, The Florey Institute of Neurosciences and Mental Health

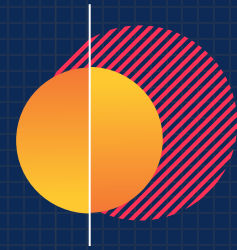
Michelle is a neurological physiotherapist and PhD scholar who has now joined A/Prof Nadine Andrew's group on the Peninsula Health-funded "Comprehensive Care Project" as a Project Officer, and Prof Natasha Lannin's group as a Research Physiotherapist on a "Falls after Stroke" RCT at Alfred Health, Melbourne.

Her research used reviews, observational study, and a virtual reality factorial study to explore how the physical design of hospitals might impact on adults with brain injury. This included involvement of stroke participants in a virtual reality study.

RESEARCH 2

BREAKING DOWN THE SILOS

AUSTRALASIAN HEALTH DESIGN CONFERENCE 2022



SPEAKER INFORMATION



Dr Ramsey Awad

Executive Director Infrastructure, Planning & Sustainability, Hunter New England Local Health District – NSW Health

Ramsey is the Executive Director of Infrastructure, Planning and Sustainability for Hunter New England Health, which is one of Australia's largest Health services covering the geographical area of the UK with over 80 facilities.

His team is responsible for: Clinical Planning & Delivery, Capital Works, Engineering & Maintenance, Biomedical Engineering and Sustainability.

His qualifications include a PhD in health & medicine, Bachelor degrees in architecture and construction management and executive training from the Harvard and Cambridge Business Schools.

DEBATE



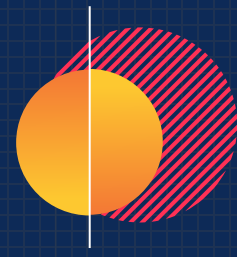
Sanaz Memari

Architecture PhD student at Deakin University, Research Intern at Billard Leece Partnership

Sanaz is PhD candidate and research assistant at Deakin University and research intern at Billard Leece Partnership.

Her PhD research and practice-based research project explore future proofing in the context of hospital buildings.

RESEARCH 1



SPEAKER INFORMATION



Shari Blanch

Designer and Lead Health Researcher in Architecture (Jacobs)

Based in Brisbane, Shari is a designer and lead health researcher in the architecture team at Jacobs and has extensive experience working on all aspects of health facility design on national and international projects.

Shari has been instrumental in pioneering the study of post-occupancy evaluations for healthcare facilities at Jacobs and is passionate about bridging the gap between academic research and practice.

Shari completed a master's thesis on comparing practice-based research methods in large Australian architecture practices, and has studied a Master of Social Change and Development.

RESEARCH 1



Sharon Desmond

Mercy Health, Manager, Clinical Service Design & Service Planning

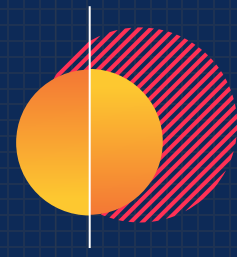
Sharon is the Group Manager of Caring for People and Planet at Mercy Health; a role that is responsible for operationalising Mercy Health's strategy of "Caring for People and Planet". This role is also responsible for oversight of service planning, including sustainable model of care development and planning for later infrastructure investment.

Sharon's career commenced in nursing; with Masters qualifications in Business Administration and Business Research Methods. Sharon has commenced a PhD in environmental sustainability in public health services.

SESSION 8

BREAKING DOWN THE SILOS

AUSTRALASIAN HEALTH DESIGN CONFERENCE 2022



SPEAKER INFORMATION



Siobhan Titlestad

Senior Interior Designer, COX Architecture

Siobhan is a highly accomplished Senior Interior Designer with over ten years' experience in design and research in the commercial, workplace, health, multi-residential and education sectors.

She has expertise in complex stakeholder groups, particularly where design demands organisational change management and assisting users in identifying opportunities for organisational change.

Siobhan has a vested interest in design for community wellbeing, this is intrinsically linked to creating spaces that are both inviting and safe for women to access. She's thrilled to co-author research which could lead to a new building typology that empathetically responds to women in vulnerable situations.

SESSION 9



Stephanie Clarke

Interior Designer in the Health team at ClarkeHopkinsClarke Architects'

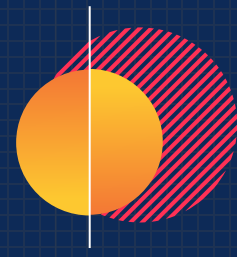
Interior Designer in ClarkeHopkinsClarke Architects' Health team. From New York to Melbourne she has worked on diverse health, workplace commercial and seniors living & care projects. Mental health co-design with clinicians and people with lived experience is a speciality.

Stephanie's focus is design fit for purpose that supports communities and individuals to thrive. Her research interests include biophilic design, neurodiverse sympathetic interiors and intersectional sustainability.

SESSION 2

BREAKING DOWN THE SILOS

AUSTRALASIAN HEALTH DESIGN CONFERENCE 2022



SPEAKER INFORMATION



Tara Veldman

Managing Director | Principal | Health Sector Leader, BLP

Tara is the Managing Director and Health Sector Leader instrumental in the expansion of BLP. She brings 25 years of experience and a dedication to designing a healthy world in a cross-section of spaces, including health, education precincts, research labs, and residential communities.

Combining her interests in psychology, art, and architecture, Tara is fascinated by how buildings and spaces make people feel. Her passion for sustainable architecture is inspired by her time living in Australia, the Netherlands, Frankfurt, and the Middle East.

Grounded in research and insight, her human-centred design approach and active stakeholder engagement allow the voices of those who will occupy the spaces to be heard.

WORKSHOP How Do We Eat an Elephant?



Tianyi Yang

Doctor of Philosophy [Design], Swinburne University of Technology

Tianyi Yang is a PhD candidate, an award-winning architectural graduate and a senior tutor with experience in academic research at the Swinburne University of Technology.

Tianyi is highly skilled in virtual reality technology and computational design and modelling. In the past three years, she has produced cutting-edge interdisciplinary academic research with the Swinburne University of Technology, the University of Melbourne, The Florey Institute of Neuroscience and Mental Health, and RMIT.

She has significant practical experience in Australia working for award-winning architectural practice Harrison and White.

RESEARCH 2



**THANK
YOU**

For being part of **#AHDC2022**